



CERTIFICATE

on approval of the production process quality system



Reg. No. 058/P-017

No. **SK 09 – 015 D** Rev. 4

This revision replaces all previous versions of this Certificate in full wording

Issued by

Slovenská legálna metrologia, n. o.
Hviezdoslavova 31
974 01 Banská Bystrica
Slovak Republic

Notified Body number **1432**

In accordance with

Annex II, Module D to Government Ordinance of the Slovak Republic No. 145/2016 Coll. relating to the making available on the market of measuring instruments, which implements, in Slovakia, the Directive 2014/32/EU of the European Parliament and of the Council of 26 February 2014 on the harmonisation of the laws of the Member States relating to the making available on the market of measuring instruments as later amended (MID).

Manufacturer

LUNA Elektrik Elektronik Sanayi ve Tic. A.Ş.
A.O.S.B 10001 Sokak No.:9
35620 Çiğli / İZMİR, Turkey

Applicant

Manufacturer

Measurement instrument **active electrical energy meters (MI-003) - Annex V to MID**

Confirmation

By means of this Certificate on approval of the production process quality system, the Notified Body No. 1432 confirms that the quality system of the production process of the manufacturer ensures – within the scope specified in the Annex to this Certificate – compliance of the produced measuring instruments with the requirements of the Annex II module D to Government Ordinance of the Slovak Republic No. 145/2016 Coll. relating to the making available on the market of measuring instruments, which implements, in Slovakia, the Directive 2014/32/EU of the European Parliament and of the Council of 26 February 2014 on the harmonisation of the laws of the Member States relating to the making available on the market of measuring instruments as later amended (MID).

Date of initial approval

2009-12-14

Date of issue

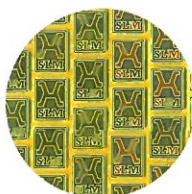
2016-07-29

Valid until

2018-10-22

Annex

3 pages



Ing. Štefan Král, PhD.
representative of notified body



Without written permission of the notified body this Certificate may be reproduced only as a whole.